

# Résidence "PARC DE SAINTE LUCIE"

COMMUNE DE BORGIO  
BATIMENT D - LOT 40 - REZ DE CHAUSSEE - TYPE 2

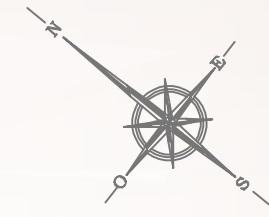
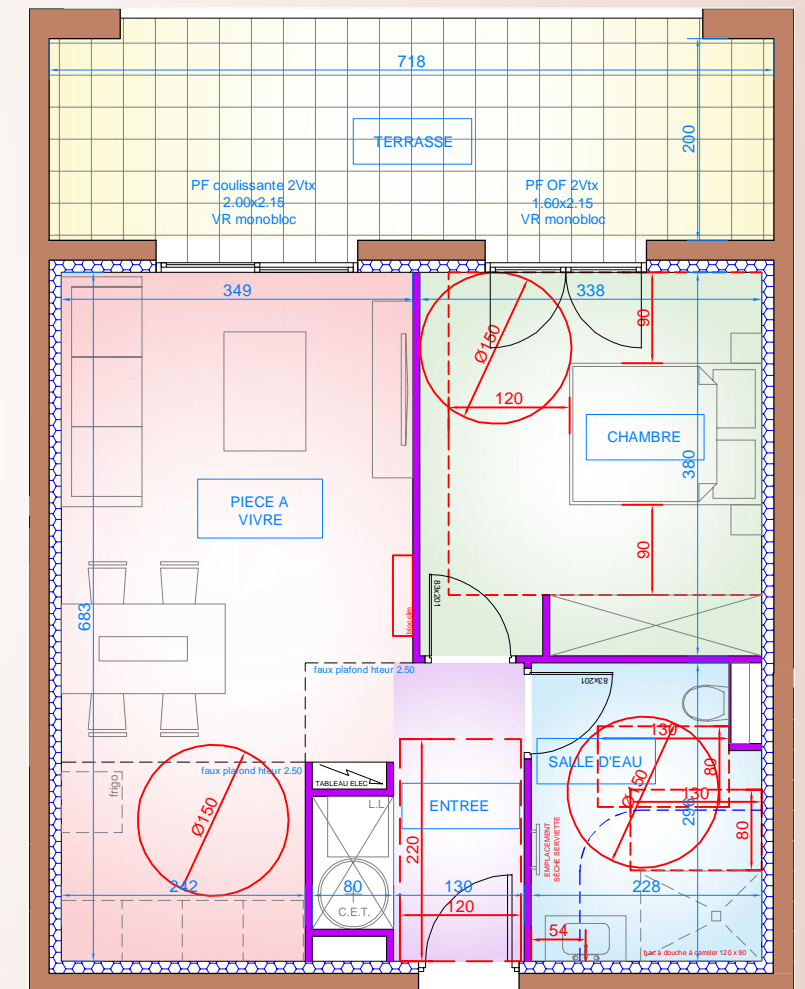


TABLEAU DES SURFACES  
BATIMENT D - LOT 40 - T2 - RdC

ENTREE	3.85m <sup>2</sup>
PIECE A VIVRE	21.50m <sup>2</sup>
CHAMBRE	12.86m <sup>2</sup>
SALLE D'EAU	6.47m <sup>2</sup>
TOTAL	44.68m <sup>2</sup>
TERRASSE	15.51m <sup>2</sup>
JARDIN PRIVATIF	env. 25.00m <sup>2</sup>



LOT 40

